

# Around the Ridges

and a bit beyond

Issue 110 June 2013

Email [aroundtheridges@hotmail.com](mailto:aroundtheridges@hotmail.com)

Fax 49 345565

Phone 49 341192

Around the Ridges and a Bit Beyond is a community and school newsletter.

The newsletter is produced monthly, and is funded through sponsorship and advertising.

If you wish to contribute to the newsletter, please send all material in by the 12th of every month.

Advertising for special events must be submitted two months in advance.

PLEASE TELL US YOUR STORIES!

We want to hear them!!!! Please send your story, as you are a valued part of our community and this newsletter.

## RIDGELANDS SHOW

The Ridgeland & District Sporting & Agricultural Assn Inc will be holding their annual show on 1<sup>st</sup> June 2013 with all the events of a good old fashioned Country Show. There will be cattle and horse events, Liberty Horse display, goat racing, cooking, horticultural, handicraft and photography competitions for all ages.

Live entertainment and country food will be served well into the night, along with show rides, show bags, Magic Show, Live Band – Shaken not Stirred – and best of all, for the first time, we'll be having Fire Works.

Bring your family along for a great day/night out with our admission cost only being \$6.00 adults and \$4.00 pensioners and high school students. Primary school students are free. If you would like a program, please contact Leonie on 49345587 or Diane on 49341192. The program is also available on the web at [ridgeshow.webs.com](http://ridgeshow.webs.com).

### Residents reminded of rubbish rules

Rockhampton Regional Council is urging residents to use Roadside Bin Stations correctly, to enable them to be readily serviced. Chair of Council's Business Enterprise Committee, Councillor Neil Fisher said that some misuse of these stations had made it difficult for them to be serviced. "These bins are serviced by trucks with the capability to pick up the bins and empty them," Cr Fisher said.

"This creates a simple requirement for users, namely that they put their rubbish inside the bins and not on the ground around them.

"The trucks that service these stations don't have the capability to scoop up piles of rubbish, so when people leave large piles of rubbish on the ground around the bins, Council has to arrange extra collections, at a further cost.

"Not only this, but where rubbish isn't put in the bins, it creates an eyesore and can also be a health risk for the community."

Cr Fisher said that while recently problems of this nature had been seen at the Laurel Banks Bin Station, it was important for residents to use all Regional bin stations in the correct manner.

"These stations are provided largely for communities who do not receive kerbside collections and are an important service for many residents," Cr Fisher said.

"We simply ask that those using them to be respectful of other users and to dispose of their rubbish in the correct way so that regular services can continue and the sites can remain as tidy as possible."

*Around the Ridges Newsletter has been made possible through funding provided to the Rockhampton Regional Council under the Community Development and Recovery Package, which is a joint initiative of the Australian and Queensland Governments under the Natural Disaster Relief and Recovery Arrangements. Although funding for it has been provided by both the Australian and Queensland Governments, the material contained herein does not necessarily represent the views or policies of either.*





## Protect your pet from Parvo

Local vets have reported several instances of Parvovirus in the last few weeks and Council is reminding pet owners of the importance of protecting their four legged friends from this terrible disease.

Chair of Council's Health and Compliance Committee, Councillor Ellen Smith said this was a virus that was very contagious and urged pet owners to be alert. "Parvovirus is a nasty and highly infectious virus that attacks dogs' gastrointestinal tract and cardiovascular systems," Cr Smith said. "Young puppies and dogs that haven't been vaccinated are particularly susceptible so it is important to ensure that your pet's vaccinations are up to date.

"The Australian Veterinary Association reports that the death rate in young non-vaccinated puppies can be greater than 80%. Cr Smith urged new pet owners to visit their vet and ensure that their dog had the appropriate vaccinations. "Pet owners should also look out for the symptoms of Parvovirus which can start with tiredness, lethargy and not wanting to play, then may include vomiting and diarrhoea," Cr Smith said.

"If you notice these symptoms it's important to get your dog to the vet as early as possible to be diagnosed and begin treatment.

## **BOOK REVIEW** by Kate Bull APRIL FOOL'S DAY by BRYCE COURTENAY



*In the end, love is more important than everything and it will conquer and overcome anything. Or that's how Damon saw it, anyway. Damon wanted a book that talked a lot about love.*

Written by one of Australia's great storytellers, April Fool's Day is a moving story that portrays the powerful love a family have for their son. Bryce Courtenay writes this tribute to his son Damon who passed away on April Fool's Day at 24 years of age. As a sufferer of haemophilia Damon endured countless blood transfusions and health complications throughout his short life, however his attitude and strength through all of this is something to admire. Further adding to his pain and suffering Damon also had to deal with the complications that come with AIDS, which he contracted from a blood transfusion later in his life. This disease is what actually caused his death. It was a bitter irony that the medicine that was helping save Damon's life was what eventually ended it. Sadly this story also brings to light the discrimination that an AIDS sufferer experienced when the disease was only just becoming known about in Australia. Throughout this book you will also understand the arrogance and insensitive manner that some of the medical profession had towards patients and their families during the 1970's and 1980's. Bryce also shows the unrelenting love Damon's partner Celeste had for his son. She was his devoted and loyal carer throughout everything, and was by his side till the very end. A truly moving and emotional story that will make you appreciate life and review what is really important to you.

**Danny McNamara**

Ph: 4934 1473

Mob: 0438 341 473

22 Sheehan Road,

Alton Downs

Servicing all cars,

4WDs,

Trucks & Tractors



## **BANOFFEE PIE**

250g pkt granita biscuits  
125g butter, melted  
395g can condensed milk  
1/3 cup brown sugar  
50g butter, for caramel  
2 bananas  
300ml thickened cream, whipped  
Grated chocolate, to garnish

### **Method:**

Line base of a 20cm springform tin with baking paper.  
Process biscuits in food processor until finely crumbed.  
Add butter and process to combine.  
Press biscuit mixture firmly over base of pan and halfway up sides.  
Refrigerate.  
Place condensed milk, sugar and butter in a saucepan.  
Stir mixture over low heat until the caramel thickens.  
Pour mixture onto biscuit base. Cover and refrigerate for 1 hour to set.  
Peel and slice bananas, and arrange carefully over caramel filling. Top with whipped cream.  
Sprinkle chocolate over pie to serve.





## DAWN SERVICE

The Alton Downs & District Combined Anzac committee would like to thank the community for their attendance and support at the Dawn Service. We estimated there was in excess of 250 people at the service which we believe to be our biggest to date. We were happy to see that most people stayed for breakfast, as it bought about a wonderful community spirit and a way to catch up with friends. This is what being Australian is all about and what our ancestors fought for.

Well done everybody.

## RIDGELANDS STATE SCHOOL NEWS

Our school will once again showcase our wonderful work at the upcoming annual Ridgeland Show. The wider community will have the opportunity to recognise the talent and achievements of our students. P & C Day was recently celebrated on Friday 10 May. Ridgeland students, families and staff would like to acknowledge the important work that is being done by our parents' and citizens' association. Over the years, our dedicated P & C volunteers have been contributing funds to purchase school equipment and facilities. Thank you to all the volunteers who have shared their expertise and talents as well as offered their services, to help organise many successful fundraising ventures.

The National Assessment Program for Literacy and Numeracy (NAPLAN) will take place for Years 3, 5 and 7 on 14 - 16 May. These tests, together with the range of school assessment items, provide valuable information on how students are performing in various aspects of literacy and numeracy. Students have been preparing for these tests to familiarise themselves with the format and requirements and hopefully alleviate any anxiety associated with NAPLAN. The school will be offering a NAPLAN Breakfast club during this period.

Every Tuesday, Ridgeland students have been enjoying participating in the Backyard League Program, organised by the 'National Rugby League' and 'NRL's One community' groups. Due to the rain last week our oval was too wet for students to participate in the developmental ball skill training, so they learnt about 'Tackle Bullying' through an interactive inside program.

All year 5, 6 & 7 students are thoroughly enjoying participating in the Rockhampton Interschool Competition playing football and netball. I have received wonderful reports that all our students are representing Ridgeland well, displaying fantastic manners and good sportsmanship qualities.

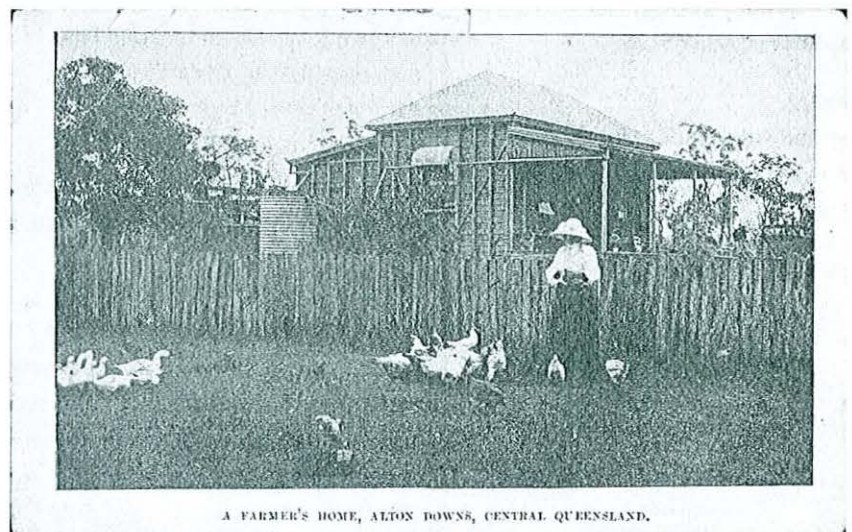
We recently welcomed new families to our school increasing our enrolments to 62 children. Please feel free to contact the school for enrolment information at any time. You can contact us on 4934 5518.

Yours in education

**Julie Paddison**

*Acting Principal*

To the right →  
A trip down memory lane...  
A Farmers House,  
Alton Downs  
Circa 1908



A FARMER'S HOME, ALTON DOWNS, CENTRAL QUEENSLAND.



# What's Happening this month?

## Meetings

### QCWA

Ridgelands Branch meetings held on the 1<sup>st</sup> Wednesday every month, starting at 9:30am.

### Stitch and Chat Group

Meets on the 2<sup>nd</sup> & 4<sup>th</sup> Tuesday of every month starting at 9:30am. QWCA room, all welcome  
Ph 49 345145

### Ridgelands & District Sporting & Agricultural Asscn Inc.

Meet on the second Wednesday of each month starting at 7.30 p.m. at the Ridgelands Show grounds. Next meeting 10 July.

### Community Notices

#### Alton Downs Hall Committee

To book community hall please contact Booking Officer, Sid Hoare on 49 341147. Alternatively call,  
T Hoare 49 34 1493  
J Chippendale 49 345120

Alton Downs Hall Asscn Inc are holding a dance at the Alton Downs Hall on the 21<sup>st</sup> July, commencing at 7.30 p.m. Music by Two Can. Raffles, Novelty Prizes. Super will be served.

QCWA Ridgelands Branch is hosting an International Day morning tea at the Ridgelands Community Hall, Friday 21<sup>st</sup> June at 9.30 a.m. Contact Hilary Chippendale on 4934 5125.

### Chair Hire

Contact the Ridgelands State School P&C to hire chairs for functions.  
Ph 49 345518

\*\*\*\*\*

Q. What dog keeps the best time?  
A. A watch dog.

Why was the man running around his bed?  
-He wanted to catch up on his sleep.

What does a snail say when it's riding on a turtle's back?  
-Weeeee!!

## Celebrations



### **Happy Birthday to everyone who is having a birthday in June.**

Ken Stewart  
Merle Smith  
Adam Bull  
Philip O'Neill  
Kay Milner  
Greg Thompson  
Jeff Thompson  
Ashley Moore  
Merv Moore  
Kelly Shepherd

It seems June is a very popular month. Have a great day on your birthday. Birthday wishes also go out to Sid and Tom Hoare for their birthday in May.

## GIVE AWAY PUPPY

Cattle dog cross.

Phone 49221665 after 7.00 p.m.

## Get Well Soon

Get well wishes go out to Pat Pointing. We all hope you are feeling better and well on the way to recovery.

## Condolences

Our thoughts and sympathy is extended to Kevin & Lyn Rosenberg and family for the recent loss of Kevin's Mum.

\*\*\*\*\*

We wish to extend our sincere sympathy to the Stanke family in the sad loss of their mother, mother-in-law and ma.

\*\*\*\*\*

We also wish to extend our deepest sympathy to Vi, Graham, Wayne, Leanne and Dan Funch and families in the recent loss of Barry – husband, father, father-in-law and grandfather. Our thoughts are with you.

\*\*\*\*\*

## Public Notice

The Ridgelands & District Sporting & Agricultural Asscn Inc would like to advise their neighbours that they will be holding their annual show on the 1<sup>st</sup> June. This year we are introducing Fireworks, which will start at 7.30 p.m. and run for approximately 15 minutes.

In order to avoid traumatising the neighbourhood animals we thought it only correct that we advise everyone of the event. Therefore if any animals require restraint or attention it gives you time to arrange it.

\*\*\*\*\*

## Lost

Battalion pin lost at the Anzac Day Dawn Service at the Hall. If found, please call 4934 1192.

### LOCAL FIRE BRIGADES

ALL EMERGENCIES DIAL 000

Contact Fire Wardens for Permits to light fires.

FIRE PERMITS must be applied for 8 hours prior to burning off.

### Alton Downs

Owen Buckle 49341245  
Sid Hoare 49341147  
Peter Hunt 0419775617

### Arcia (Upper Mornish)

Steve Farmer 49347522  
Jeff Mills 49373555  
Stewart Jones 49356616

### Calmorin

Robert Smith 49345145  
Shane Barrett 49345177

### Dalma

Eric Adams 49345940  
Kevin Stanke 49345915

### Garnant

David McAuley 49345129  
Nigel Chippendale 49345125

### Mornish

Norm Richards 49345557  
Wayne Jones 49345596  
Fran Cranston 49344434

### Faraday

Rob Chippendale 49345564  
Lynda Harding 49345648