

# Around the Ridges

and a bit beyond

Issue115 / November 2013

Email [aroundtheridges@hotmail.com](mailto:aroundtheridges@hotmail.com)

Fax 49 345565

Phone 49 3

Around the Ridges and a Bit Beyond is a community and school newsletter.

The newsletter is produced monthly, and is funded through sponsorship and advertising.

If you wish to contribute to the newsletter, please send all material in by the 15th of every month.

Advertising for special events must be submitted two months in advance.

PLEASE TELL US YOUR STORIES!

We want to hear them!!!! Please send your story, as you are a valued part of our community and this newsletter.

**Ridgelands Community School.** - Your local community school is Ridgelands State School which is situated just 25 minutes North West of Rockhampton in a semi-rural community. Our primary school is set amongst picturesque, natural gardens on acreage. Offering fresh air and wide open spaces for children to enjoy and thrive in a safe, nurturing environment. Ridgelands is a small, yet modern, progressive school, it currently caters for 61 students from Prep to Year 7. The school's eight ethical values of respect, honesty, self-control, enjoyment, motivation, teamwork, tolerance and care are reinforced through expectation and a strong disciplinary model.

Welcome to term 4 including both our returning and newly enrolled students. During the holidays, our students enjoyed some quality time with family and friends over the past two weeks. We are well underway for the final term of 2013. Our core focus is on quality teaching and learning and with you as partners; we can continue to improve achievement for every child. I am certain students will embrace the challenges and enjoy their learning.

We have a very busy and exciting term ahead with our new school website going live at the beginning of November (<http://www.ridgelands.eq.edu.au>), our Prep Orientation day on Thursday 31<sup>st</sup> of October, our Christmas Pageant on Friday night 6<sup>th</sup> of December, Year 7 Graduation Ceremony on Tuesday night 10<sup>th</sup> December and Breakup day on Thursday 12<sup>th</sup> December. Ridgelands State School will have a Student free day this term on Monday 21st October.

Swimming lessons for students in years prep to 7 commences on Wednesday 16 October, 2013 and will finish on the 27<sup>th</sup> November, at the Crescent Lagoon State School Swimming Pool. This is a heated facility. Lessons will run for 7 weeks. Students will travel to Rockhampton by bus. Parents are more than welcome to drop into the pool each Wednesday to see their child's swimming progress, or if you would like to help during lessons, please feel free to contact the school for more information. Tennis coaching with Beak's Tennis will continue this term on Tuesday lunch times. Year 7 students will have orientations to their respective secondary schools. In early November students will also attend the Life Education program.

Over the September holidays the undercover link between Block C and our new library (Resource Centre) was completed. It has been a fantastic addition to our school building facilities providing essential shade and protection from all weather conditions.

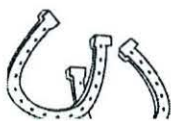
We are now taking enrolments for 2014 Prep to Year 7 and extend a warm invitation for new families to call in and make an appointment for a guided tour to experience our learning environment. If you are interested in enrolling, enrolment packs are available from the school office or telephone: 49345518 and we will send you one.

During this term, I am looking forward to continuing to maintain and develop productive partnerships with the school community, aiming to enhance our children's education.

**Julie Paddison (Acting Principal) - 43 Dalma/Ridgelands Road - RIDGELANDS**

**Disclaimer** - Around the ridges and A Bit Beyond reserves the right to edit all articles as necessary.

Submission does not always guarantee publication. The Committee does not accept responsibility for errors, omissions and inaccuracies. Opinions in the newsletter do not necessarily reflect those of this committee, school or community.





## For Sale

5 Purebred Kelpie Pups

\$500

Ready to go 22nd October 2013

3 Boys (2 tan, 1 Black)

2 Girls (Both Black)

Mother and father are from pedigree working kelpie breeders.

Parents showed early instincts

Kelpies can also be great pets as they are very loyal and smart

Please call Niki on 0400516320 for more information or to view

## Lively Knitting and Crocheting Clubs

Our Lively Knitters are in desperate need for wool! Up to 20 Lively Knitting and Crocheting Club members meet every week at the Rockhampton Regional Library to knit a host of blankets, beanies and rugs for those less fortunate.

Every bit of wool helps them. Have a look around your house and drop the wool off at your local library.

Rockhampton Regional Library – Every Wednesday 10am – 11.30am

## Myrtle Rust

As we start to enter the warmer months, Council is reminding residents to be on the lookout for Myrtle Rust.

Chair of Council's Health and Compliance Committee - Councillor Ellen Smith said the fungal plant disease was likely to rear its head again soon.

"Though the prevalence of this disease has died down recently, we cannot become complacent and need to restrict its spread and monitor its impacts on gardens, street trees and native bush land," Cr Smith said.

"The first important step is report any suspected outbreaks in new areas or in new species of plants to Biosecurity Queensland as they can help identify the rust and provide information about treatment and prevention."

## Agistment required.

Ryan and Kelli Ibbotson, "Mostowie", Moses Road, Ridgeland are looking for agistment for 20 head of cattle.

They will be feeding out round bales, as well as lick and grain. (The organised block they had fell through). If you can help, please ring 0409 472 957.

**Acknowledgement** - The Ridgeland Rodeo & Show Assn Inc would like to thank the Rockhampton Regional Council for the grant they recently received. This grant enabled the Ridgeland Rodeo & Show Assn Inc to purchase water tanks for the grounds. These tanks will be a great asset.

## Spinal Injuries Association

### Personal Support Worker – Casual work available in Garnant

### Want to make a difference in someone's life?

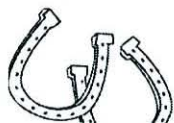
### Well you've just found a job you can get excited about!

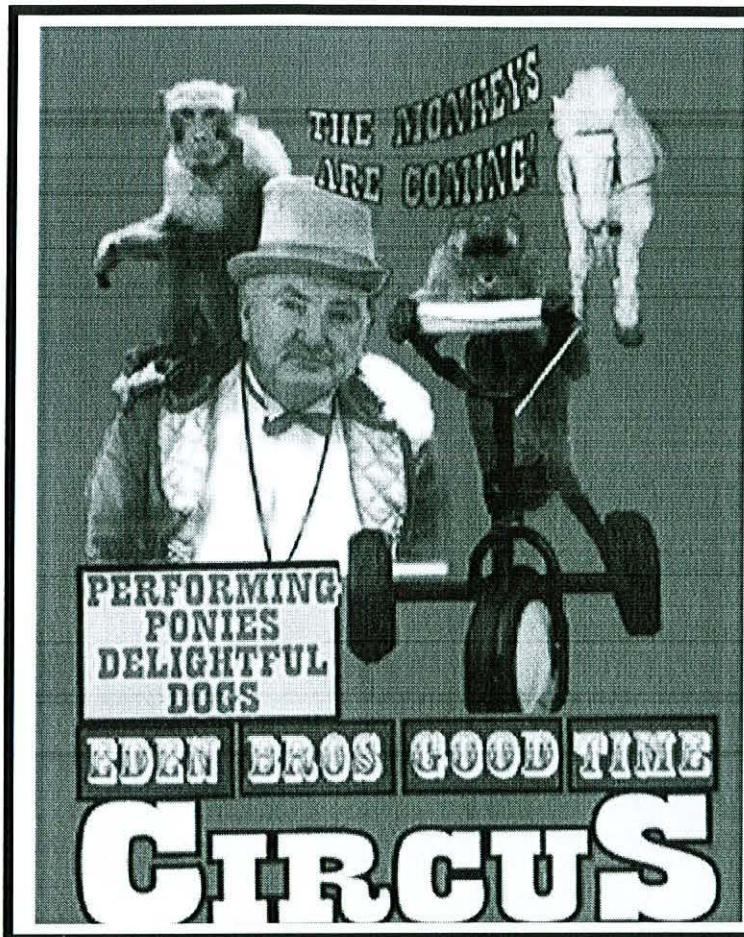
The Spinal Injuries Association is seeking reliable, trustworthy people to provide in home personal care and lifestyle support for clients who have a spinal cord injury.

- Various morning and evening shifts
- Fully paid, comprehensive training & orientation program provided
- Experience is an advantage but not essential
- Flexibility with working hours
- **MUST** have own vehicle and drivers licence.

For further information, please visit our website at [www.spinal.com.au](http://www.spinal.com.au) under the Working with us section and follow the prompts. Alternatively send your resume to [swakeham@spinal.com.au](mailto:swakeham@spinal.com.au) or for information call 07 47 551 755.

The Rockhampton Regional Council has provided funding to assist in the printing of Around the Ridges newsletter, under the community development recovery package which is a joint initiative of the Australia and Queensland Government. The material included in this newsletter does not represent the views or policies of State or Federal Government.





# EDEN BROS

## GOOD TIME CIRCUS

### VENUE

Ridglands Show Grounds

### DATE

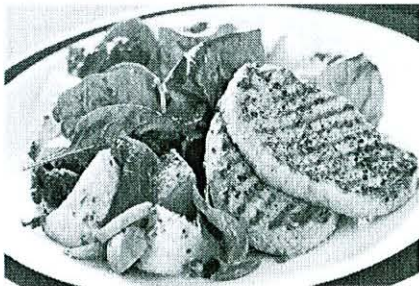
**Tuesday** - 12<sup>th</sup> November  
Commencing 7.30 p.m.

### ENQUIRES

Phone: 0407 224680

### Barbecue pork with potato salad

Spring time was made for easy entertaining, so turn up the heat for this terrific pork dish with potato salad.



600g Desiree potatoes, cut into 3cm chunks  
2 green onions, trimmed, sliced diagonally  
100g semi-dried tomatoes (not in oil)  
2 teaspoons light olive oil  
85g green olives stuffed with feta cheese, sliced  
60g baby spinach leaves, trimmed  
8 small pork loin medallions, trimmed  
olive oil cooking spray

#### Dressing

1 teaspoon honey, 1 tablespoon wholegrain mustard, 1 tablespoon lemon juice, 1 small garlic clove, crushed, 1 tablespoon thick, plain yoghurt

Preheat a barbecue plate and grill on medium-high heat. Place potato, in a single layer, in a microwave-safe dish. Drizzle with 1 tablespoon water. Cover. Cook on HIGH for 8 to 9 minutes or until just tender. Drain. Add green onion, tomatoes and oil. Toss gently to combine. Spoon potato mixture onto barbecue plate. Cook, turning often, for 3 to 5 minutes or until potato is light golden. Transfer to a large bowl. Add olives and baby spinach. Toss gently. Meanwhile, lightly spray pork with oil. Season with salt and pepper. Cook on barbecue grill for 4 to 5 minutes on each side or until just cooked through. Make dressing: Whisk all ingredients, 2 teaspoons hot water and salt and pepper in a jug. Pour over potato salad. Toss gently to combine. Spoon potato salad onto plates and serve with pork medallions.



# What's happening this month?

## Meetings

**QCWA** Ridgelands Branch meetings are held on the 1<sup>st</sup> Wednesday every month, commencing at 9:30 a.m.

### Stitch and Chat Group

Meets on the 2<sup>nd</sup> & 4<sup>th</sup> Tuesday of every month starting at 9:30am.

QWCA room, all welcome

Ph 49 345145

### Ridgelands & District Sporting & Agricultural Asscn Inc.

Monthly meetings are held on the second Wednesday of each month.

Next meeting 13<sup>th</sup> November commencing at 7.30 p.m. at the Ridgelands Show grounds.

**Faraday Rural Fire Brigade** will hold a public meeting regarding the fire levy for 2014/15, followed by the Brigade's AGM for the election of officers. The meeting will be held on 8<sup>th</sup> November 2013 at 7.30 pm, at the Ridgelands Hall.

For further information contact John McLean on 4934 5553 or 0412 379 425.

## Events

### Alton Downs Hall Committee

will be holding a dance on Friday 29<sup>th</sup> November at 7.30 p.m. Two Can will be playing. Super, Raffles and Novelties

**Quote** - Good humour is a tonic for mind and body. It is the best antidote for anxiety and depression. It is a business asset. It attracts and keeps friends. It lightens human burdens. It is the direct route to serenity and contentment

## Community Notices

### Alton Downs Hall Committee

To book community hall please contact Booking Officer, Sid Hoare on 49 341147.

Alternatively call,

T Hoare 49 34 1493

J Chippendale 49 345120

### Chair Hire

Contact the Ridgelands State School P&C to hire chairs for functions.

Ph 49 345518

## Date Claimers

The Ridgelands Hall committee will be holding their Christmas Karaoke night on Saturday 30<sup>th</sup> November

Distribution of Newsletter  
If you know anyone in the community who does not receive the Around the Ridges newsletter and would like to read it, please contact us on 4934 1192 or email – [aroundtheridges@hotmail.com](mailto:aroundtheridges@hotmail.com) and we can arrange to send it to them.

It will also be available on the following website soon – [fitzroyridges.com.au](http://fitzroyridges.com.au)

**ENGINE CENTRE  
ROCKHAMPTON**  
All Engine Reconditioning,  
Tuning, Servicing all  
makes of vehicles,  
Your engine specialist,  
Specialising in Fleet  
Maintenance  
**CARS, 4WD, TRUCKS  
& TRACTORS**  
074934 1473  
0438 341 473  
22 Sheehan Rd Alton Downs  
QLD 4702

## Celebrations



Happy Birthday to everyone who is having a birthday in November.

Robyn O'Neill  
Dave Fry  
Judy Stanke.

## Congratulations

To Alan & Therese Bloomfield on your 50<sup>th</sup> Wedding Anniversary. Best wishes from all your family and friends. Enjoy your celebration.

## New Arrivals

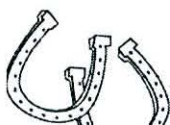


Congratulations to Dan and Leanne Sedgman on the safe arrivals of their son Max Cooper on the 26<sup>th</sup> September – 7lb. Brother for Lucy and Lawson.

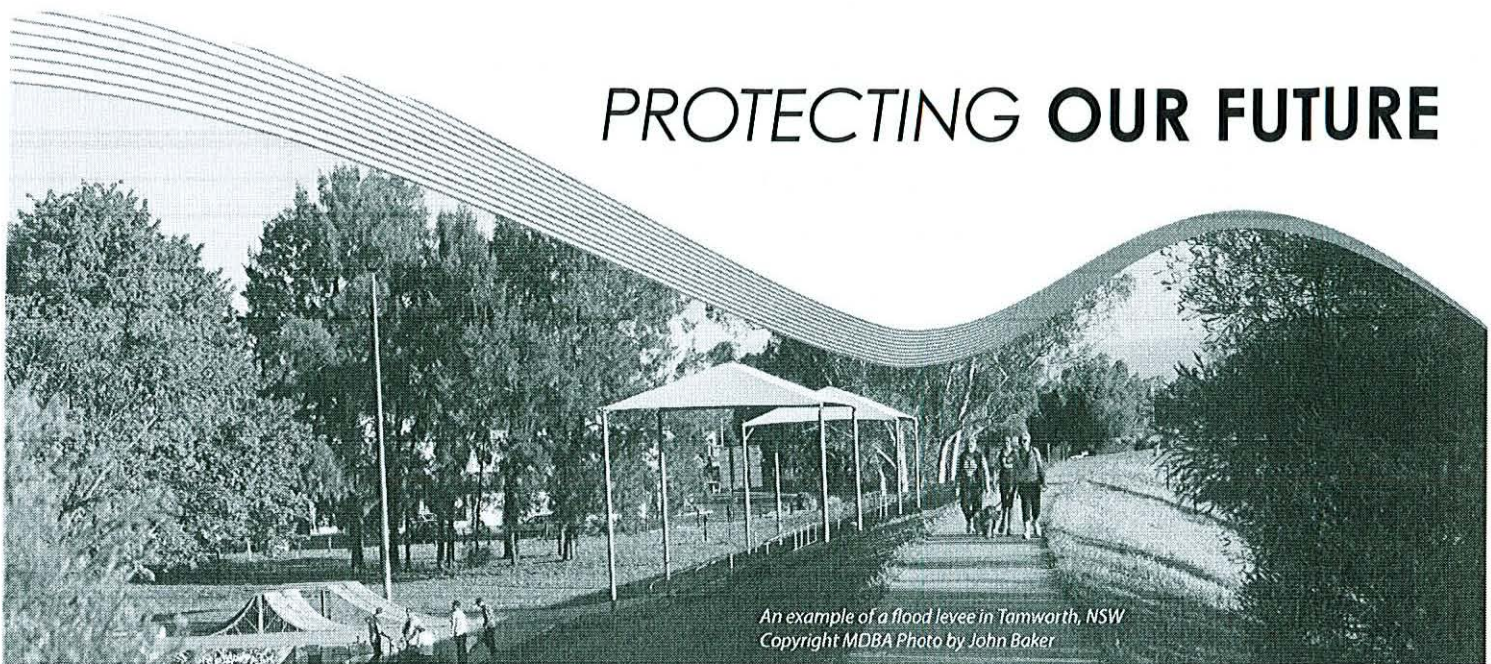
Congratulations to Ian and Kay Nicholls on the arrival of their first grandchild. Tasha Kate, 7lb 1 oz arrived 3<sup>rd</sup> October to proud parents Angela and Gaurav Fingh (nee Nicholls).

## Condolences

We wish to extend our sincere sympathy to the family of James (Jim) Monaghan. Our thoughts are with you.



# PROTECTING OUR FUTURE



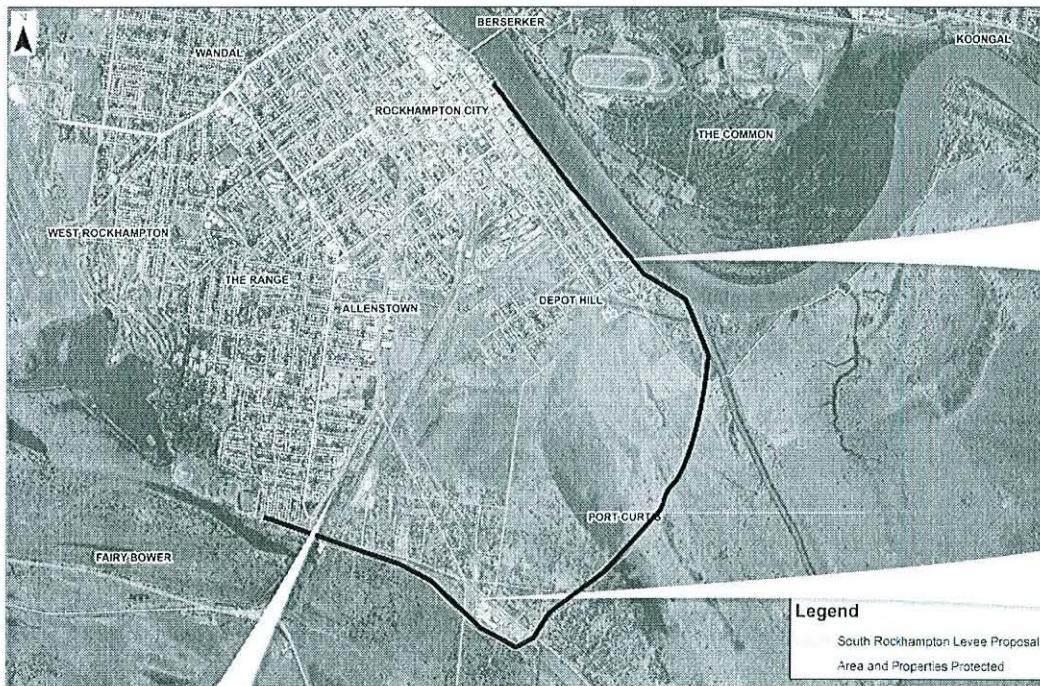
An example of a flood levee in Tamworth, NSW  
Copyright MDBA Photo by John Baker

## What is proposed?

The concept of a levee bank to protect large parts of South Rockhampton is not new and was first recognised as the best option for flood mitigation in the 1992 Rockhampton Flood Management Study. The South Rockhampton Flood Levee was then reviewed in the 2011 Fitzroy River Flood Study.

## What has already been considered

- Dig a canal from Pink Lily through Yeppen to Gavial Creek. Would cost \$248 million, not an option.
- Dredging the Fitzroy River deeper. This is expensive and would need to be done regularly. Not an option.
- The break even cost of the levee is approx 200 homes... equivalent to only 20% of those being protected.



## Protecting the community

The South Rockhampton Flood Levee is proposed to protect 1500 properties including 1000 dwellings, 350 commercial and a number of rural properties. It will protect private property, public infrastructure and community facilities and has the potential to lower insurance premiums for home owners and businesses.

## Protecting the economy and jobs

The levee will protect business operations and 3,000 jobs bringing some of the Region's biggest employers out of the water. Business in the area that will be protected have reported estimated costs from the 2011 and 2013 floods in the tens of millions of dollars.

## Protecting essential infrastructure

The proposed levee will offset \$40 million in works required to flood proof the Bruce Highway through Rockhampton by protecting the part of Gladstone Road that gets flooded.

This will also mitigate the substantial impacts on other parts of our region and the Queensland economy as a result of flooding of the Bruce Highway."

## What does flooding cost?

Flooding has a huge impact on the Rockhampton Region with the 2011 flood costing the Region's economy \$35 million.

## How will we pay for this?

We have asked for \$13 million from each level of government. That is \$13 million from the State Government and \$13 million from the Federal Government. To help us cover our share of the cost (\$13 million) we are approaching major industry who will benefit from the levee.

## Have your say

Residents can have their say via our Community Engagement Register on our website or by phone. A wider consultation will be undertaken once funding has been confirmed for the indepth design/modelling phase.

## For more information visit

[www.rockhamptonregion.qld.gov.au](http://www.rockhamptonregion.qld.gov.au)  
or call 4932 9000 or 1300 22 55 77.



RockhamptonRegionalCouncil



@RRCouncil



# Waste Rural & Semi Rural Areas

## COMMUNITY ENGAGEMENT UPDATE

**Alton Downs**  
**Dalma**  
**Garnant**  
**Glenroy**  
**Laurel Bank**  
**Morinish**  
**Pink Lily**  
**Ridgeland**  
**South Yaamba**

# Your needs ... Our options

During August 2013, Rockhampton Regional Waste and Recycling conducted community engagement in rural and semi rural areas to assess resident's needs in regard to their waste. Based on the information gathered, RRWR could then make suggestions on what new options could be offered based on and working within the *Waste Reduction and Recycling Act QLD (2011)*. In total 317 surveys were completed with 191 people attending town meetings.

*This is a quick snapshot of the survey and meeting outcomes. A summary of survey results can be found on our website and several hardcopies have been distributed to the rate payer group for circulation.*

### What residents asked for . . .

- **Laurel Bank Bin Station** - Preferred option is the existing facility, same location with introduction of monitoring devices, recycling and a caretaker.
- **Alton Downs Transfer Station** - Review hours of operation, make recycling accessible and review site operations to make dumping easier.
- **Ridgeland** - Mixed views. Retain where it is and improve monitoring or have a Localised Bin Station facility at another site close by. What ever direction, monitoring and recycling requested.
- **Dalma Bin Station** - Retain as is.

#### Summing up the Ridgeland meeting

21 August 2013 | Attended by 45 Residents

Need to be more proactive to catch and prosecute illegal dumpers

Litterers/Illegal dumpers are not local residents

Increase operating hours at Alton Downs

Consideration for localised station to be moved to the old quarry site

Residents from Dalma happy with their area

#### Summing up the Alton Downs meeting

26 August 2013 | Attended by 61 Residents

Request for local caretaker for Laurel Banks

Keep Bin Station at Laurel Banks

Litterers are not locals

Concerns over scavenging

Idea of including drive up ramp

Dalma residents want to keep their service

#### Overall Regional Survey comments . . .

Ranking	Overall Comments	Concerns/Issues
1	24%	Non Locals using facilities.
2	20%	Users leaving areas in a mess.
3	18%	Better facilities required
4	11%	Cleanliness/safety issues
5	10%	Concerns with change

#### WHERE TO FROM NOW . . .

Council is (as at Nov 2013) being presented with options developed from what residents asked for in the *Your Needs, Our Options* engagement.

Council will then decide on what costed options should be brought back to the community for a final engagement in the new year. That round of meetings will be held in early 2014 due to higher than expected workload relating to the Deamagalation.