

# Around the Ridges and a bit beyond

Issue 155 July 2017 E: [aroundtheridges@hotmail.com](mailto:aroundtheridges@hotmail.com)  
Phone 4934 1192

## National Farm Safety Week 17th to 21st July 2017

National Farm Safety Week is held each year to raise awareness of farm safety issues across Australia.

For more information contact Farmsafe on 02 6269 5666 or via email [info@farmsafe.org.au](mailto:info@farmsafe.org.au)

### Theme:

*"Creating a resilient, safe and healthy ag community".*

Farmsafe Australia members are united in efforts to reduce the deaths and injuries associated with health and safety risks on farms. The 2017 National Farm Safety Week theme continues to highlight the importance of business and industry working together to increase the well-being of Australian farmers through improved attention to health and safety, in line with the Farmsafe goal.

National Farm Safety Week is an opportunity for Farmsafe Australia to address farm safety issues that have a national focus and has been running successfully for the past 19 years.



## Ridgeland's Show

The Ridgeland's & District Sporting & Agricultural Association Inc would like to thank everyone who attended the show.

Once again it was a great success with different rides and a working dog demonstration presented by Matthew Frankish.

*Thank you Matthew.*

Our sincere thanks must also go to Merv Moore for his chain saw carving (which always draws a crowd) of a crocodile and eagle



which were auctioned for a total of \$4,500.

There were some novel attractions at this year's show including the annual favourites to name a few there were; Plenty of fun for the Kids, Tyrone O'Reilly Circus and Fire Stunts, Dodgem Cars, Big Slides, Richo's Camel Rides, Train Rides, Billy Cart Races, Competitions and too many others to mention.

So if you didn't get to the show this year there is an opportunity to have a fun day out at next year's Ridgeland's Show.

**Disclaimer:** *Around the Ridges and a bit beyond* reserves the right to edit all articles as necessary. Submission does not always guarantee publication. The Committee does not accept responsibility for errors, omissions and inaccuracies. Opinions in the newsletter do not necessarily reflect those of this committee, school or community.

# Stock Route Information

The Queensland stock route network is mainly used for moving stock, pasture for emergency agistment and long-term grazing. To use the stock route network, you need permits for: travelling stock on foot; grazing (agistment) of stock; using water facilities.

## The stock route network must be managed –

- (a) to ensure it remains available for public use; and,
- (b) to maintain and improve the network's natural resources and travelling stock facilities for use by travelling stock and for other purposes.

## Payment for use:

A person who benefits from using the stock route network must pay a reasonable amount for its use.

## Application for permit:

(1) a person may apply to a local government for a stock route agistment permit for relevant land in the local government's area.

(2) However, a person may apply only if –

(a) the person is a landowner and the owner's land is adversely affected by drought, fire or flood; or

(b) the person is travelling stock under a stock route travel permit and the stock require agistment for –

(i) branding, crutching, dipping, drenching, jetting, shearing or trucking; or

(ii) spelling to comply with the owner's obligations under an Act relating to the care or protections of the stock; or

(c) both of the following apply –

(i) the permit is for either –

(A) if the issuing entity is a local government prescribed for section 104 – relevant land identified in the issuing entity's stock route network management plan as land containing more pasture and water than is needed for the use of travelling stock; or

(B) otherwise – relevant land is the issuing en-

tity is satisfied contains more pasture and water than is needed for the use of travelling stock;

(ii) the issuing entity has given notice that a person may apply for a permit for the land.

## Grazing stock without permit:

A person must not, without reasonable excuse, graze stock on relevant land unless the person holds—

(a) a stock route agistment permit or stock route travel permit for the land; or

(b) permission given under another Act allowing the stock to be grazed on the land. Maximum penalty—50 penalty units.

## Offence to allow stock to stray:

A person must not, without reasonable excuse, allow stock to stray onto the stock route network. Maximum penalty—

(a) for not more than 10 head of stock—100 penalty units; or

(b) for more than 10 head of stock—400 penalty units.

## Stock movements requiring a stock route travel permit:

A person must not drive stock on foot on relevant land in a local government's area unless a local government has issued a permit (stock route travel permit).

A person may drive stock on foot on relevant land in a local government's area without a stock route travel permit if the stock are driven on foot—

(a) for not more than 1 day; and

(b) in clear daylight hours; and

(c) for animal husbandry or property management purposes; and

(d) between parcels of land having common ownership or worked as a single unit.

## More information:

<https://www.legislation.qld.gov.au/LEGISLTN/CURRENT/L/LandPrPSRMA02.pdf>

## ENGINE CENTRE ROCKHAMPTON

Servicing All Makes of Vehicles – Cars, 4WDs, Trucks & Tractors

.....your engine specialist



- ✓ Qualified Technician
- ✓ Logbook & Fleet Vehicle Servicing
- ✓ Brakes, Steering & Suspension
- ✓ Diff Overhauls & Upgrades
- ✓ Full Spools, Lockers & LSDs
- ✓ Clutch Replacements
- ✓ Engine Rebuilding & Tuning
- ✓ Performance Upgrades / Chips
- ✓ Turbos
- ✓ Superchargers



- ✓ Prosystems & CSU Carbies
- ✓ Brodix Cylinder Heads
- ✓ Methanol & E85 Ethanol
- ✓ Nitrous Kits & Refills
- ✓ Digital Flowbench
- ✓ Professional Cylinder Head Porting
- ✓ Full Race Car Set-ups
- ✓ Sonic Testing
- ✓ Amsoil Racing Oil
- ✓ MSD Ignitions



22 Sheehan Road Alton Downs QLD  
Email: [enginecentrerockhampton@gmail.com](mailto:enginecentrerockhampton@gmail.com)

Telephone: 0749 341473  
Mobile: 0438 341473

## BIG COLOUR WORKS

*sponsor the printing of  
Around the Ridges  
every second month for free.  
THANK YOU!*

*Around the Ridges and a bit beyond is a community and school newsletter. Stories, notices, poems, anecdotes and historical memoirs need to be submitted by the 11th of the previous month — if you have a special event, allow two months lead time. We love our sponsors - and hope that you do too. Please support them and buy locally!*

A mouse looked through the crack in the wall to see the farmer and his wife open a package.

"What food might this contain?" The mouse wondered - he was devastated to discover it was a mousetrap.

Retreating to the farmyard, the mouse proclaimed the warning: "There is a mousetrap in the house! There is a mousetrap in the house!"

The chicken clucked and scratched, raised her head and said, "Mr. Mouse, I can tell this is a grave concern to you, but it is of no consequence to me. I cannot be bothered by it."

The mouse turned to the pig and told him, "There is a mousetrap in the house! There is a mousetrap in the house!"

The pig sympathised, but said, "I am so very sorry, Mr. Mouse, but there is nothing I can do about it but pray. Be assured you are in my prayers."

The mouse turned to the cow and said, "There is a mousetrap in the house! There is a mousetrap in the house!"

The cow said, "Wow, Mr. Mouse. I'm sorry for you, but it's no skin off my nose."

So, the mouse returned to the house, head down and dejected, to face the farmer's mousetrap alone. That very night a sound was heard throughout the house -- like the sound of a mousetrap catching its prey. The farmer's wife rushed to see what was caught. In the darkness, she did not see it was a venomous snake whose tail the trap had caught.

The snake bit the farmer's wife. The farmer rushed her to the hospital, and she returned home with a fever.

Everyone knows you treat a fever with fresh chicken soup, so the farmer took his hatchet to the farmyard for the soup's main ingredient.

But his wife's sickness continued, so friends and neighbours came to sit with her around the clock. To feed them, the farmer butchered the pig. The farmer's wife did not get well; she died.

So many people came for her funeral, the farmer had the cow slaughtered to provide enough meat for all of them.

The mouse looked upon it all from his crack in the wall with great sadness.

So, the next time you hear someone is facing a problem and think it doesn't concern you, remember when one of us is threatened, we are all at risk. We are all involved in this journey called life. We must keep an eye out for one another and make an extra effort to encourage one another.

#### REMEMBER . . .

Each Of Us Is A Vital Thread In Another Person's Tapestry.

## Creamy Lemon Thyme Chicken

Family-favorite creamy lemon thyme chicken is full of flavor, easy to prepare, and will be on the table in just 30 minutes - a dish you'll put on repeat all season long!



#### Prep time:

5 mins

Cook time

20 mins

Total time

25 mins

**Author:** Tiffany

**Recipe type:** Main Dish

**Cuisine:** American

**Serves:** 4 servings

#### Ingredients:

- 6 boneless skinless chicken thighs or 4 boneless skinless chicken breasts
- 2 teaspoons Italian seasoning
- 2 teaspoons finely chopped fresh thyme
- 1 teaspoon garlic powder
- 1 teaspoon lemon pepper
- juice of 1 medium lemon (about 2 tablespoons)
- 1 cup heavy cream
- ½ cup low sodium chicken broth
- ½ cup sliced mushrooms
- 1 teaspoon minced garlic

#### Instructions:

1. Whisk together Italian seasoning, chopped thyme, garlic powder, and lemon pepper. Season chicken with half of the mixture. Cook chicken in a greased pan or skillet over medium heat 5-7 minutes on each side until lightly browned and cooked through. Transfer chicken to a plate and cover to keep warm.
2. Add garlic and mushrooms to pan and stir over medium heat 2-3 minutes until fragrant and mushrooms are tender. Stir in chicken broth, lemon juice, and remaining seasoning mixture. Stir in cream until mixture begins to boil, cook another 2-3 minutes, stirring constantly.
3. Return chicken to pan and toss in the sauce to coat. Garnish with lemon slices, fresh thyme, and cracked black pepper as desired. Serve hot.

Thanks for being awesome customers!

**Robo's**  
GROUP

FAMILY DRIVEN SAFETY

[www.robosgroup.com.au](http://www.robosgroup.com.au)

**Robo's**  
MOTORWORKS

[07] 4921 0200

**Robo's**  
TYREWORKS

[07] 4927 3360

**Robo's**  
CYCLEWORKS

[07] 4921 2016

**Robo's**  
BATTERY PLUS

[07] 4921 3327

**Robo's**  
FULCRUM  
SUSPENSION SPECIALISTS

[07] 4921 3998

**Robo's**  
EQ  
MANUAL GEARBOX  
DIFF CENTRE

[07] 4927 3466

**Robo's**  
TOM LEYDEN  
Tyres & Mechanical

[07] 4933 1695

24/7 TYRE  
EMERGENCY  
CALL OUT

0457 474 358

# COMMUNITY

## Alton Downs Dump Hours

May to August  
Tuesday, Thursday, Saturday  
and Sunday: 2pm - 5pm

## ALTON DOWNS HALL

Indoor Bowls	8 July	7:30pm
Trivia Night	21 July	7:30pm
Hall Meeting	26 July	7:30pm
Dance	26 Aug	7:30pm
Card Night	21 Oct	7:30pm
Dance	29 Sept	7.30pm

## Alton Downs Pony Club

Meeting 1st Tuesday  
of the month 7.30pm  
Alton Downs Hall

*Next Meeting 4-7-2017*

## Alton Downs Indoor Bowls

2nd Saturday of every month  
7:30pm

*Next Bowls Night 8-7-2017*

## Fitzroy Northern Area Ratepayers Association

Meetings for 2017

Monday 7th August 2017  
7:30pm

Monday 6th November 2017  
7:30pm

If you have a problem that you would like the Rockhampton Regional Council to address, come along to the meeting and explain your concern to the Councillors or council staff.

Anyone who would like to play  
Indoor Bowls at

**Alton Downs Hall**  
monthly on Saturday nights  
please contact Sid  
ph. 4934 1147

*Next Bowls Night 8-7-2017*

## QCWA Ridgелands Branch

Meeting 1st Wednesday every  
month commencing at 9.30am  
QCWA Ridgелands Hall  
Contact Joyce 4934 5120

QCWA Ridgелands Branch will be  
holding an Afternoon Tea  
and multi draw raffle on  
Sunday 10 September at 1.30 p.m.  
in aid of the

Capricorn Helicopter Service.

*Please support this most worthy cause*

## Ridgелands & District Sporting & Agricultural Association Inc

Meetings are held on the 2nd  
Wednesday of the month,  
commencing at 7.30 p.m.  
at the Ridgелands Show grounds.

Next meeting 12th July.

## Ridgелands Play Group

Wenesdays fortnightly  
during school terms.

All parents & children welcome.

Please bring along a plate of food to share.

Krissy Wilkings 0407 743 141

## Saint Lukes Anglican Church

Service 11am fourth Sunday of each  
month at the QCWA Hall Ridgелands

## Stitch and Chat Group

Meet on the 2nd & 4th Tuesday  
of every month at 9:30am

QCWA Hall Ridgелands  
4934 5125

# NOTICEBOARD

## HAPPY BIRTHDAY

*To all our local residents  
celebrating their special*

*day in July:*

Edgar Frankish  
George Tyrell  
Georgia Bull  
Glenda Jones



Nev Milner  
Noah Bull

## Agriculture & Human Health Solutions

### Conference

at Rockhampton

17th and 18th July – wonderful  
range of world class speakers  
including Professor Don Huber  
(USA), Dr Judy Carman, Anita  
Rossiter, Dr Sandrine Makiela  
and more.. It is time to begin to  
design solutions to the problems  
in Agriculture & Human

Health

Ph. 4938 3919

[mick@grazingbestprac.com.au](mailto:mick@grazingbestprac.com.au)

## Emergency Services Day

Sunday 30th July 2017

9am to 2pm

Rockhampton Heritage Village

## Annual Country Fair

Ridgелands State School

19th August 2017

Everyone welcome

Please come along and support  
our local school.

## Community Sign at Pink Lily

To promote your local  
Community Event on the sign,  
Please eMail:  
[admin@fitzroyridges.com.au](mailto:admin@fitzroyridges.com.au)  
by the 11th of the month before  
the month of your event.

# Guide to Winter Gardening

Winter can be a hard time for plants, especially in cold areas. And even in the warmer parts, plants can find the winter months hard going. Growth slows right down and problems become more evident when a plant's in its cold-weakened state.

But there are many things you can do to help your garden cope with the cooler months, so here's a timely checklist for preparing your garden for winter:

- Move potted tropical plants and other warmth lovers into more protected spots – perhaps onto a verandah or porch. If cold-sensitive plants are growing in the garden or are too heavy to move, spray them with a layer of Yates Stressguard. This see-through polymer will provide a few degrees of frost protection.
- Reduce watering of potted plants. They require much less water when the weather's cooler. Take the chill off tap water by mixing in a small amount of hot water. It shouldn't feel warm – just slightly tepid to the touch. This means it won't shock the roots so much.
- Prepare planting holes for new roses and fruit trees by digging compost and well-aged manure into the soil.
- If the soil has any drainage problems, winter is the season when they'll expose themselves. Use a garden fork to push vertical holes into heavy soils. Create surface drains to carry away excess moisture. Dig gypsum where possible into clay. Gypsum has a miraculous effect on



most clay soils. It binds particles together, allowing air to get into the spaces between the particles and helping excess water to drain away. Deep layers of mulch on the soil can ensure that it remains cold and damp for three months or more. Hence, it can be a good idea to remove some of the thickness of mulch so that the sun can penetrate to warm up the soil.

- Construct frames around the plants that are likely to be damaged by the cold or frosts. If supports are already in place it only takes an instant to throw a piece of cloth or plastic over them in the evening. Don't forget to remove the covering in the morning, though, or the plants might cook in the midday sun.
- Fortunately, in our climate, winter doesn't have to be bereft of colour. You can choose plenty of suitable varieties for planting now. Polyanthus, for example, are some of the prettiest winter-flowering plants. They bloom in a wide range of colours – blues, pinks, yellows, cream and white – often with a contrasting central eye. They'll grow in light shade or full sun and, if the following summer doesn't get too hot, they'll produce an encore performance next year.
- Winter is the wettest season in Mediterranean-type climates, so don't let that precious water go to waste. Install a tank now so that you can store water for the future.
- Feed plants with high-potash Thrive Flower & Fruit to build up their strength before winter.

More Information at:


<http://www.yates.com.au/winter#oSzPTs5VjYGmHcFb.99>

## ***Wandal Medical Centre***

- Family General Practice
- Men's, Women's & Children's Health
- Immunisations
- Chronic Disease care
- In house Podiatrist
- Male & Female Doctors – Dr Pri & Dr Lorraine
- Bulk Billed (excluding Employment/Speedway Medicals)

**53 Baden Powell St**  
**WANDAL Q 4700**

**Ph: 4927 4411**  
**4927 4688**



**ALTON DOWNS  
POLOCROSSE CLUB  
ANNUAL CARNIVAL**

**29TH AND 30TH JULY 2017  
FROM 8AM DAILY**

**FINALS FROM 11AM  
SUNDAY**

**FRIDAY NIGHT DINNER AND DJ**

**SATURDAY NIGHT DINNER  
AND LIVE BAND**

**GREAT FAMILY DAY OUT**

**FREE ENTRY - ALL WELCOME**

# Please support your local Sponsors

**ALTITUDE WEALTH SOLUTIONS**

Financial Planning	Superannuation	Life Insurance	Income Protection
Succession Planning	Investment Portfolios	Annuities	Centrelink Strategies
Cashflows/Budgeting	Retirement Planning	Aged Care	Redundancy

Servicing Central Highlands, Central Western Qld & Capricornia

Office 07 4082 4300 Dan Fletcher 0428 754 547 Matt Hibbich 0477 997 701 Kristian Ham 0419 419 216  
(Central Western Qld) (Central Highlands) (Capricornia)

**Battery World**

Phone 13 17 60  
24 hr Service

Skip Wren  
Proprietor

61 Musgrave Street  
North Rockhampton QLD 4701  
T: (07) 4922 9022  
F: (07) 4922 9044  
batteryworld.com.au

E: rockhampton@batteryworld.com.au

Wayne Boon  
0421 273 391

**Boony's SCREENS**

CRIMS SAFE  
STOPPERS  
1800 333 000

QBCC 15030834  
ABN: 32427227616

wboonyscreens@gmail.com  
boonyscreens.com  
boonyscreenscreens  
106 South Yamba Rd, Alton Downs

Crimsafe Doors & Screens  
Safe-s-capes & Petway Doors  
Security Doors & Screens  
Patio Enclosures & Bi-Fold Doors  
Horizontal Lattice  
Residential & Business

**Brian Dawson AUCTIONS**

YOUR BRAND TO SUCCESS! Livestock and Property Marketing

Joel Dawson

Mobile 0417 213 777  
Office (07) 49 274 123  
A/H (07) 49 213 666  
Fax (07) 49 273 785

P.O. Box 2053,  
WANDAL, Q. 4700

Email: brian@bdaqld.com  
www.bdaqld.com

**Brian Dawson AUCTIONS**

YOUR BRAND TO SUCCESS! Livestock and Property Marketing

Phil Wieland

Mobile 0408 238 290  
Office (07) 49 274 123  
A/H (07) 49 213 666  
Fax (07) 49 273 785

P.O. Box 2053,  
WANDAL, Q. 4700

Email: brian@bdaqld.com  
www.bdaqld.com

**Cliff Munro Mechanical Repairs**

204-206 William Street  
— 49 224 882 —

Repairs and Servicing to  
all makes and models  
ROADWORTHY CERTIFICATES  
MODIFICATION PLATES

**CQ Natural THERAPY**

Tricia Purnell  
Qualified Bowen Therapist

0488 341 010 | cqnaturaltherapy@bigpond.com  
186 Denham Street, Rockhampton QLD 4700

**DELROSA**

- GRADER, BOBCAT & DOZER HIRE
- HAY & STOCK FEED
- MULCH
- GRANITE & ROAD BASE
- BACKHOE HIRE
- BOBCAT WITH TRENCHER
- TIP TRUCKS HIRE
- DRINKING WATER

Ph. 4934 1135  
Mob: 0418 155 819

16 Delrosa Rd,  
Alton Downs

**DYNAMIC SERVICES**

CARPET CLEANING & PEST CONTROL

The Clean You Can See!

UPHOLSTERY - LOUNGES - RUGS  
CALL DAN

49361 593 ---- 0406303425

**ENGINE CENTRE ROCKHAMPTON**

- All Engine Reconditioning
  - Tuning
- Servicing all makes of Vehicles
  - Your Engine Specialist
- Specialising in Fleet Maintenance

**CARS, 4WD, TRUCKS & TRACTORS**

Ph: 0749 341473 Mob: 0438 341473  
22 Sheenan Road Alton Downs QLD 4702

**FARMBUTCHER**

Slaughter and butchering of cattle, pigs and sheep. All processed in a refrigerated mobile butcher shop, Mince, sausages, corned meat and rolled roasts, all cut to your requirements. Cryovac of whole cuts available. Please call Jamie for an obligation free quote.

Ph. 0429 675 744

**FIREARMS INSTRUCTOR  
TRAINER & ASSESSOR**

Category A, B, C, D & H

**BEN ABOTOMEY**

Ph: 0429 341550  
Email: Nyssaph2@bigpond.com  
Licence No: 74001612-00

**Grant Christoff Landscaping**

0419 179 839  
BSA: 1080766

We do it all

**GREG THOMPSON EARTHMOVING**

Large Industrial & Construction Specialist

3, 6, 20 & 24 tonne excavators - range of buckets, augers, rockhammers & jaw crusher buckets  
Bobcats - augers, chaindigger, broom & pallet forks  
Tippers - small & large, water tank, dog & tag trailer

26 Dalma/Ridgeland Road  
Ridgeland QLD 4702  
Ph: 0407 156662  
A/H: 0749 345587  
Fax: 0749 345556  
Email: greg@earthmoving@bigpond.com

**GTE**  
GREG THOMPSON EARTHMOVING  
0407 156 662

Laurie & Jan Jones

**Laurie's AUTO ELECTRICS**

AUTO ELECTRICAL REPAIRS  
AUTO AIR CONDITIONING  
GRACO SPRAYFOAM AGENT & REPAIRS

Ph: (07) 4922 1195

55 Archer Street  
Rockhampton Q. 4700  
Fax: (07) 4921 2729  
email: RUSSELL98@bigpond.com

**Local Hairdresser**

With over 25 years of hair experience located in McKenzie Road, Alton Downs

Haircutting and highlighting for Men | Women | Children  
Call Madonna on Ph: 0429 340 294

# Please support your local Sponsors

**Marriage & Civil Celebrant**

**Jill C Fry, JP Qual**

Mob: 0488 341 444  
e: jillefry@hotmail.com

**Mrs & SM McQuillan**  
Painting Contractor

New & Repaints  
Interior & Exterior  
Free Quotes  
Morrie McQuillan  
QBSA 054184  
49345560 0407 272 224

**ORAMS NURSERIES**  
167 VON ALLMEN ROAD  
PINK LILY  
49279791 - 0418198288  
OPEN 7 DAYS 8am - 4pm  
[www.oramsnurseries.com.au](http://www.oramsnurseries.com.au)

**Our Garden Shed**

Chainsaws • Brushcutters  
Ride-ons • Blowers • Trimmers  
Stationary Motors etc

Sales  
Service  
Spares

**SMALL MOTOR & MOWER REPAIR SPECIALIST**

267 Alma St  
Rockhampton QLD 4700  
Ph: 4922 7663  
Fax: 4922 7748

ABN 12 095 084 558  
Quality Products - Quality Service

**Peter Anderson Contracting Pty Ltd**  
ABN 87 124 022 831



Truck & Dog, Quarry Materials - Granite, Sands & Soils  
Bobcats (Track & Skid Steer), Excavator  
Contact Peter 0427 140 470,  
[pla73@bigpond.com.au](mailto:pla73@bigpond.com.au)

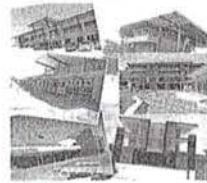
**QUANTITY SURVEYOR**

Based in Rockhampton since 1996



**NEIL RICHARDSON**  
QUANTITY SURVEYOR

- TAX DEPRECIATION REPORTS
- Fully Qualified Quantity Surveyor
- Personalised Property Inspection and Report Preparation
- Your Local Expert



Like us on Facebook

**1300 661 685** [www.njr.com.au](http://www.njr.com.au)  
Email: [tax@njr.com.au](mailto:tax@njr.com.au)

**REES R & SYDNEY JONES**

SOLICITORS - EST 1864

Traditional values - Modern approach

Our local team can assist with:

Gas & mining matters | Wills & Estate Planning | Family Law | Litigation | Resumption  
Rural & cottage conveyancing | Commercial | Partnership & Business Restructures

[enquire@reesjones.com.au](mailto:enquire@reesjones.com.au) | Phone: (07) 49276333 | [www.reesjones.com.au](http://www.reesjones.com.au)  
Level 1, 55 Denham Street Rockhampton



**RICHARD THOMSON**

PHONE: 07 4927 1308 MOBILE: 0438 345 928  
FAX: 07 4921 1735 EMAIL: [thomsonprop@cqnet.com.au](mailto:thomsonprop@cqnet.com.au)

RURAL PROP PD BOX 1259, ROCKHAMPTON 4700

**Ridgeland Road Family Day Care**

Before and after school care available

One on one care in warm and loving environment where children learn through play.

Monday to Friday

Outside normal hours available.

Ph. 0457 085 769

*Skin Deep Rejuvenation Clinic*

*Kitty Wren*  
Beauty Massage  
Hair and Nails

61 Queen Elizabeth Dr Nth Rockhampton 4701  
PH: 07 4927 4450 MB: 0408 341 347

**STROPS UPHOLSTERY**  
*Kevin & Lyn Rosenberg*

CANVAS  
HORSE RUGS  
FURNITURE  
MOTOR  
MARINE

PH: 4927 2137  
FAX: 4927 1768  
MOB: 0419 024 897

125A STANLEY ST ROCKHAMPTON 4700

For all your rural contracting needs.....

**T F CONTRACTING**

- ✓ Rural Fencing
- ✓ Weed Control
- ✓ Mustering
- ✓ Yard Building

TREVOR & EMMA FRANKISH  
Phone: 0455 789 786  
58 Dalma/Ridgeland Road Ridgeland Qld 4702

**Peter Hunt**  
Think Water - Rockhampton  
MANAGER



236 Lion Creek Road  
Rockhampton QLD 4700  
Phone 07 4927 5700  
Fax 07 4927 3566  
Mobile 0419 775 617  
Email [peter.hunt@thinkwater.com.au](mailto:peter.hunt@thinkwater.com.au)

**WANDAL ROAD CONVENIENCE STORE**

\*FISH & CHIPS, BURGERS, COLD DRINKS\*

133 Wandal Road  
Rockhampton, QLD, 4700

Ph: 4922 5494  
Tracey & Ken Milner

**Wandal Need and Feed**

236 Lion Creek Road, ROCKHAMPTON

49 275700



**Wandal Post Office**  
10 Wandal Road, Wandal  
Phone: 49272101



Privately owned and operated  
Great service

Gifts and office supplies, with photocopying,  
laminating and fax services