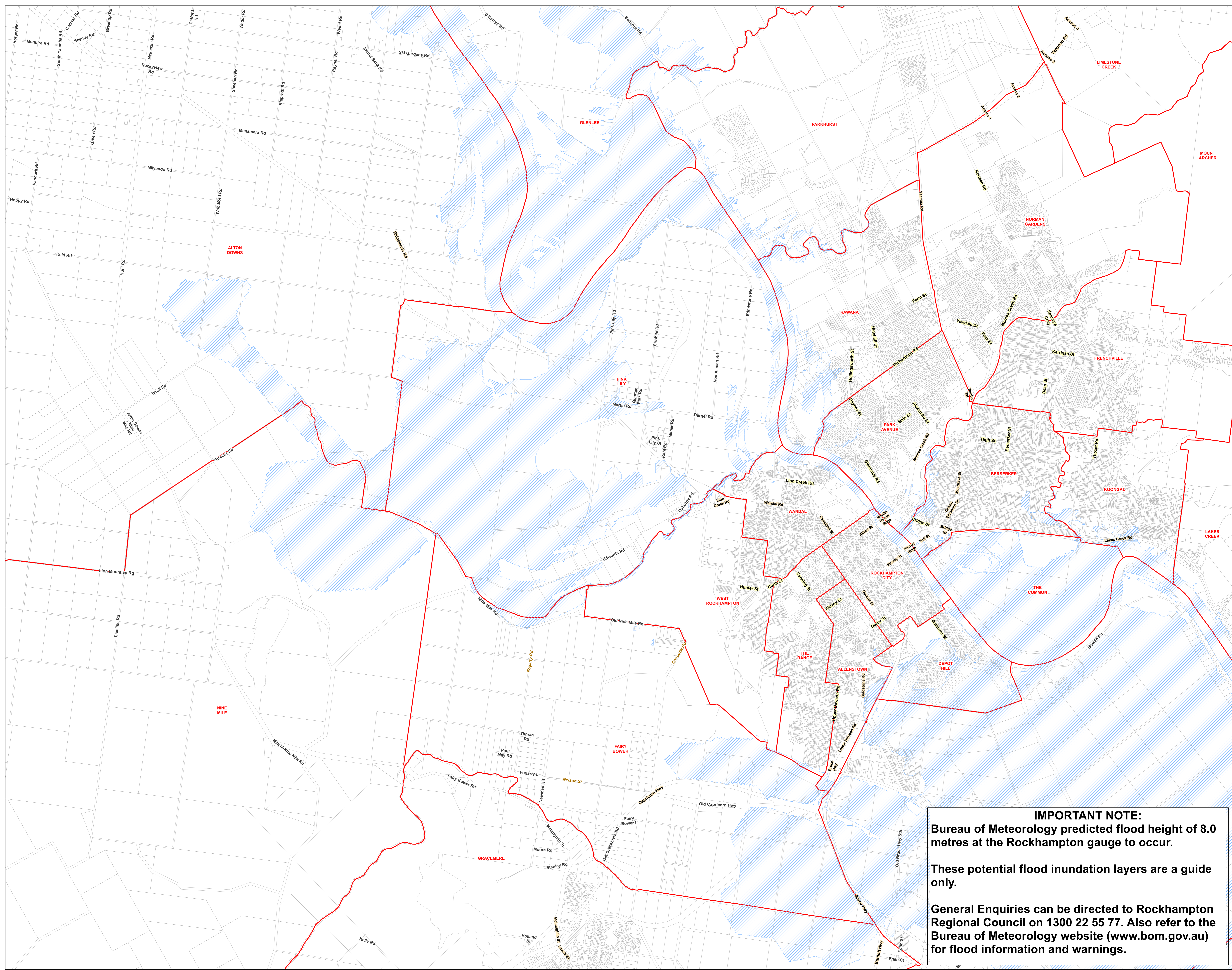
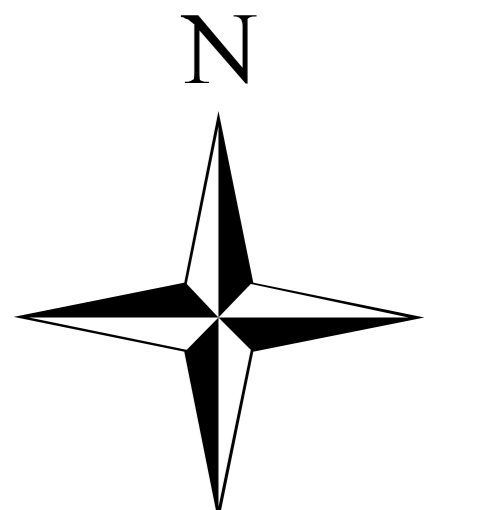


Potential Flood Inundation

Potential Flood Inundation at a Gauge Height of 8.0m



1:20,000
0 0.5 1 2 Km



IMPORTANT NOTE:
Bureau of Meteorology predicted flood height of 8.0 metres at the Rockhampton gauge to occur.

These potential flood inundation layers are a guide only.

General Enquiries can be directed to Rockhampton Regional Council on 1300 22 55 77. Also refer to the Bureau of Meteorology website (www.bom.gov.au) for flood information and warnings.



Copyright protects this publication. Reproduction by whatever means is prohibited without prior written permission of the Chief Executive Officer, Rockhampton Regional Council. Rockhampton Regional Council will not be held liable under any circumstances in connection with or arising out of the use of this data nor does it warrant that the data is error free. Any queries should be directed to the Customer Service Centre, Rockhampton Regional Council or telephone 1300 22 55 77. The Digital Cadastral Data Base is current as at January 2013. Copyright The State Government of Queensland (Dept. of Environment and Resource Management) 2013. All other data copyright Rockhampton Regional Council 2013.